

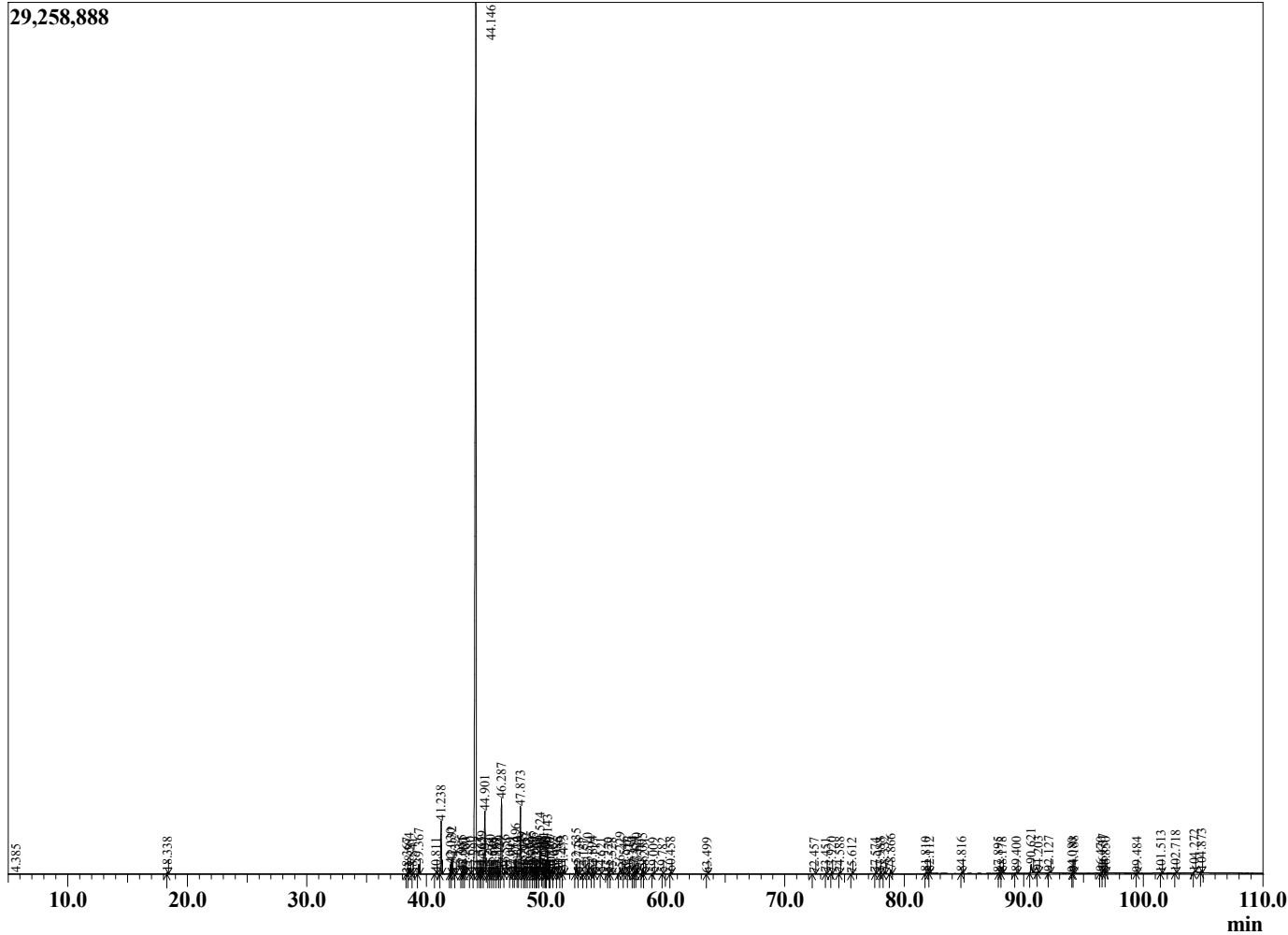
Sample Information

Sample Type : Essential Oil  
 Sample Name : *Copaifera langsdorfii*  
 Injection Volume : 0.10

Copaiba  
 Lot# SMK13-KK  
 Country: South America



Chromatogram *Copaifera langsdorfii*



R.Time	Name	Area%
4.179	Unidentified	0.01
4.385	3-Penten-2-ol	0.01
18.338	cis-beta-Ocimene	0.07
38.367	Elemene isomer	0.02
38.584	delta-Elemene	0.28
38.841	Methyl anthranilate	0.01
39.367	alpha-Cubebene	0.51
40.811	alpha-Ylangene	0.06
41.238	alpha-Copaene	2.90
42.030	beta-Cubebene	0.55
42.132	beta-Elemene	0.60
42.432	Unidentified	0.02
42.985	Cyperene	0.19
43.091	Isocaryophyllene	0.10
43.260	alpha-Gurjunene	0.02
43.680	Bergamotene isomer	0.04
44.146	beta-Caryophyllene	69.14
44.377	2,6-Diisopropylanisole	0.06
44.565	Farnesene isomer	0.06
44.659	gamma-Elemene	0.43
44.901	trans-alpha-Bergamotene	3.56
45.222	beta-Copaene	0.04
45.360	Farnesene isomer	0.20
45.528	Unidentified	0.04
45.769	beta-Santalene	0.06
45.883	cis-Murrola-3,5-diene	0.04
46.129	cis-beta-Farnesene	0.14
46.287	alpha-Humulene	4.30
46.556	Alloaromadendrene	0.18
47.009	beta-Elemene	0.03
47.313	cis-Murrola-4(14),5-diene	0.07
47.496	gamma-Murolene	0.88
47.670	gamma-Curcumene	0.07
47.873	Germacrene D	3.88
48.049	(Z,E)-alpha-Farnesene	0.35
48.235	delta-Selinene	0.03
48.362	beta-Selinene	0.27
48.563	gamma-Murolene	0.18
48.765	Bicyclogermacrene	0.53
48.956	alpha-Murolene	0.28
49.081	cis-alpha-Bisabolene	0.12
49.221	delta-Cadinene	0.05
49.308	Unidentified	0.05
49.524	beta-Bisabolene	1.55
49.698	cis-gamma-Bisabolene	0.04
49.831	gamma-Cadinene	0.32
49.960	Unidentified	0.03
50.006	Unidentified	0.03
50.143	delta-Cadinene	1.36
50.330	cis-Calamenene	0.02
50.477	beta-Sesquiphellandrene	0.28
50.652	trans-gamma-Bisabolene	0.03
50.985	trans-Cadina-1,4-diene	0.09
51.239	Unidentified	0.10
51.473	trans-alpha-Bisabolene	0.21
52.535	Germacrene B	0.54

R.Time	Name	Area%
52.738	Unidentified	0.02
53.157	Unidentified	0.04
53.510	Caryophyllene alcohol	0.28
53.894	Caryophyllene oxide	0.15
54.117	Globulol	0.02
54.621	Viridiflorol	0.03
55.220	Ledol	0.05
55.528	Humulene epoxide II	0.03
56.229	Humulane-1,6-dien-3-ol	0.39
56.546	Epicubenol	0.05
56.916	Unidentified	0.08
57.354	alpha-Muurolol	0.09
57.451	epi-alpha-Muurolol	0.19
57.600	delta-Cadinol	0.28
58.095	Cadin-4-en-10-ol	0.33
58.251	Selin-11-en-4-alpha-ol	0.04
59.009	beta-Bisabolol	0.04
59.782	alpha-Bisabolol	0.02
60.458	Junipercamphor	0.10
63.499	Unidentified	0.02
72.457	Unidentified	0.04
73.451	Unidentified	0.03
73.920	Kolavelool	0.06
74.588	Thunbergol	0.06
75.612	Unidentified	0.02
77.574	Unidentified	0.02
77.988	Kaur-16-ene	0.02
78.332	Manool	0.13
78.866	Manool analog	0.23
81.810	Linoleic acid	0.08
82.112	cis-Vaccenic acid	0.04
84.816	3-alpha-acetoxy-Manool	0.08
87.895	Unidentified	0.02
88.178	Unidentified	0.06
89.400	Methyl copalate	0.09
90.621	Copalol	0.73
91.203	Kolavenol	0.08
92.127	Kolavelool	0.09
94.080	Unidentified	0.02
94.188	Unidentified	0.08
96.470	Unidentified	0.06
96.637	Unidentified	0.32
96.850	Unidentified	0.03
99.484	Unidentified	0.03
101.513	Unidentified	0.02
102.718	Unidentified	0.04
104.272	Unidentified	0.09
104.873	Unidentified	0.13
		100.00